

IntelliJect EFI

IntelliJect is an Electronic Fuel Injection system designed by Power4Flight specifically for use in small engine aerospace applications.

Hardware features

- Onboard power conditioning (8-30 Volts in)
- Three injector driver outputs with fault detection
- Three ignition driver outputs
- Fuel pump control output
- PWM outputs for throttle and dual cowl flap control
- Manifold and dual barometric pressure sensors
- Dual redundant crank sense inputs
- Four configurable temperature inputs
- Fuel pressure input
- Analog and PWM throttle position input
- CAN and Serial communications
- Compatible with Currawong EFI accessories
- Weights
 - Board Only: **29.0g** (1.02oz)
 - With Enclosure: 71.3g (2.51oz)
- Size
 - Board Only: **45mm x 75mm** (1.77" x 2.95")
 - With Enclosure: 51.4mm x 80.4 (2.03" x 3.17")



Software features

- Highly configurable for a variety of engine types (two-stroke, four-stroke, triples, twins and singles)
- Designed to be integrated with third party systems, particularly flight controllers
- Freely available communications specification and software developers kit
- Sophisticated and robust firmware designed for high reliability aerospace applications
- Choice of alpha-n or speed-density fuel injection with multi-variable compensation
- Direct throttle command, RPM control, or throttle sensing
- Configurable throttle limiting based on temperature and/or speed
- Spark and injection interruption for rev limiting
- Injector skipping to improve injector dynamic range
- Fuel pump control using proportional or bang-bang fuel pressure feedback
- Fault detection and correction for MAT, MAP, Baro, CHT, fuel pressure, and crank sense
- Freely available user interface for engine and configuration development
- MicroSD card slot for onboard data logging
- Onboard electronic log-booking and maintenance tracking

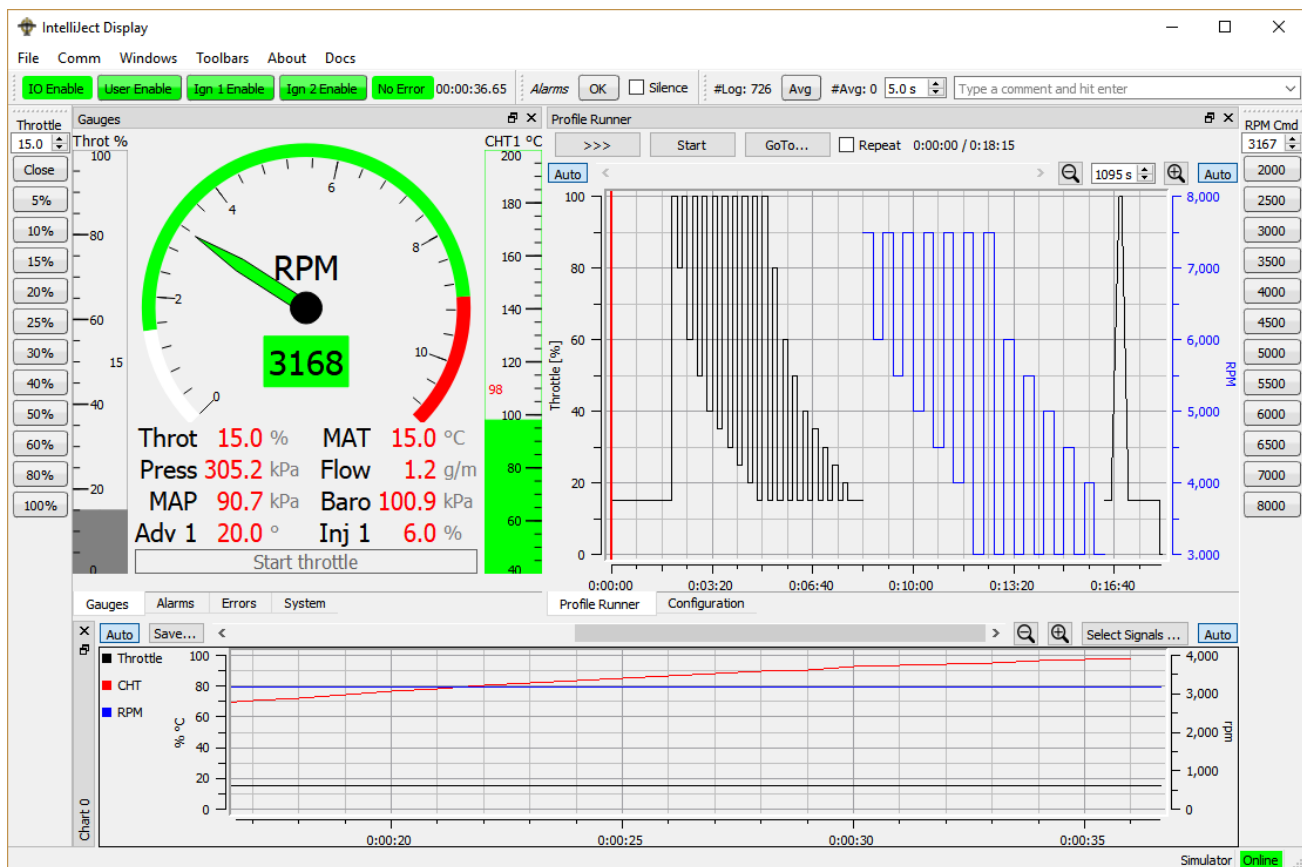
New for version 2: Automatic series hybrid control

\$2600 USD

- Includes enclosure
- Volume discounts available

\$2000 USD OEM

- Custom configurations available



The IntelliJect display software is a development tool used to configure the IntelliJect, test engines, and develop software that interfaces with the IntelliJect. It is freely available from Power4Flight.